



30 September 2020

MOSSEL BAY MUNICIPALITY





PRESENTATION

- Aim
- Mossel Bay in Context
- Competitive Advantages
- Future Developments
- Opportunities



AIM

To create better conditions for economic growth and employment generation to improve the quality of life of all residence of Mossel Bay Municipality (MBM) through cooperation in an organized manner to facilitate and implement local economic deliverables.:

- MBM in discussion possibility of a twinning agreements with Immenstaad;
- MBM in process to apply to become a Special Economic Zone;
- We want to focus on Marine Aquaculture, Tourism, Automation, Robotics, Telecom, media, Oil & Gas, Education and Higher Learning;
 - We are open for business..



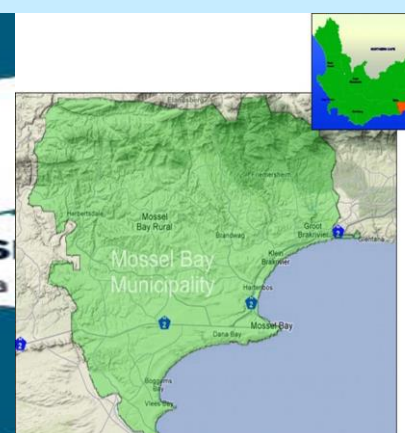
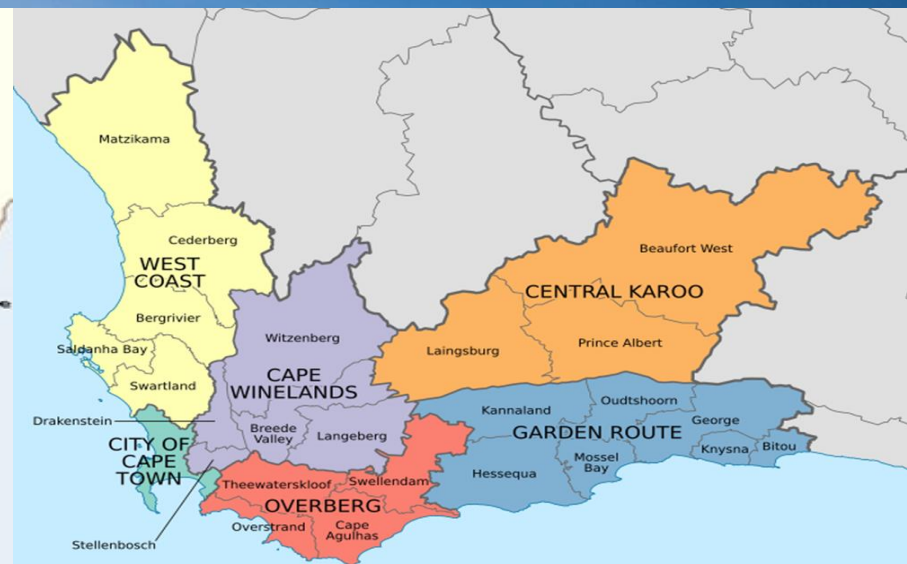
MOSSEL BAY MUNICIPALITY

Mossel Bay Municipality is:

- Trendsetting, innovative municipality (electronic submission of building plans)
- World Class Service Delivery
- Financially viable, administrative sound municipality (shared 1st place for financial sound)
- Stable political environment and good governance
- Functional Thusong Service Centre
- Established annual festivals and events
- Municipal-funded cleaning projects / initiatives – tourism mecca, retirement preference, accolades, AfriForum complaint
 -  2007 Rapport National Town of the Year
 -  2010 Kwêla Provincial Town of the Year
 -  2016 National Greenest Municipality
 -  2017 Kwêla National Town of the Year
 -  2018 Rated Most Financially Sustainable Municipality in South Africa
 -  2019 Top Performing Municipality in South Africa,
 -  Good Governance Africa 2019 Africa (Ratings Afrika)
 -  2020 Top Financial Sustainable Municipality in Western Cape & South Africa (Rating Africa)



LOCATION





MOSSEL BAY

- The Mossel Bay municipal area is situated halfway between the Cape Town Metro area and Port Elizabeth in the Eastern Cape Province.
- The municipal area has a 122 km long coastline.
- The moderate climate of Mossel Bay is regarded as second best in the world.
- The PetroSA plant and harbour are important infrastructure to the municipal area. The harbour serves the local fishing industry, the gas industry and to a smaller extent the tourism industry
- The town of Mossel Bay is the main urban node in the municipal area.
- Smaller towns include Boggom's Bay, Brandwag, Buisplaas, D'Almeida, Dana Bay, Glentana, Fraaiuitsig, Friemersheim, Great Brak River, Hartenbos, Herbertsdale, Hersham, KwanNonqaba, Little Brak River, Outeniqua Beach, Reebok, Ruiterbos, Southern Cross, Tergniet and Vleesbaai.



MOSSEL BAY

Item	Statistics
Population (2018)	99 319
Households	31 766
Population (2023)	105 556
Literacy Rate (2011)	85.7%
2015 Matric Pass Rate	87.4%
Learner-Teacher Ratio	40.4%

Matric outcomes within the Mossel Bay area have remained consistently above 80 per cent between 2013 and 2015, with the highest pass rate of 92.6 per cent recorded in 2015.



MOSSEL BAY

Economic Indicator	Percentage
Average GDP growth (2005 – 2015)	3.2%
Employment growth (2005 – 2015)	2.1%
Major Economic Activities	Percentage
Commercial Services	27.5%
Wholesale, Retail, Catering & Accommodation	17.3%
Manufacturing	15%
Access to service delivery	Percentage
Water	98%
Refuse	87.2%
Electricity	95.6%
Sanitation	95.9%

Mossel Bay is also a popular retirement destination



MOSSEL BAY

Year	Children	Working Age	Aged
	0 -14 Years	15 – 65 Years	+65
2011	20 683	59 727	9 020
2017	22 963	63 892	11 137
2023	23 763	68 840	12 953
Unemployment Rate		18.3%	



MOSSSEL BAY

Economic Growth

- 1\$ = between R14 and R15
- Mossel Bay comprised R5.20 billion (or 17.5%) of the Districts total R29.65 billion GDPR as at the end of 2015.
- GDP growth averaged 3.2 per cent per annum over the period 2005-2015.
- The average annual growth in the post-recessionary period is 2.5%.



Competitive Advantages

PetroSA

- SA National Oil Company
- The world's first gas-to-liquid (GTL) refinery at Mossel Bay
- The core business activities of PetroSA are:
 - The exploration and production of oil and natural gas
 - The participation in, and acquisition of, local as well as international upstream petroleum ventures
 - The production of synthetic fuels from offshore gas at one of the world's largest Gas-to-Liquid (GTL) refineries in Mossel Bay, South Africa
 - The development of domestic refining and liquid fuels logistical infrastructure
 - The marketing and trading of oil and petrochemicals



Competitive Advantages

- PetroSA's GTL refinery produces ultra-clean, low-sulphur, low-aromatic synthetic fuels and high-value products converted from natural methane-rich gas and condensate using a unique GTL Fischer Tröpsch technology.
- Key commodities produced include unleaded petrol, kerosene (paraffin), diesel, propane, liquid oxygen and nitrogen, distillates, eco-fuels and alcohols. Its world-class synthetic fuels and petrochemicals are marketed internationally.



Competitive Advantages





Competitive Advantages





Competitive Advantages

TNPA – Transnet National Ports Authority

- Smallest of the 5 National and Commercial Ports along the South African coast.
- In the past Mossel Bay has always been a fishing port of substance with limited commercial cargo activity.
- Lately it started to service the Oil Industry.
- Mossel Bay is the only South African port that operates two off-shore mooring points within the port limits.
- Planned Infrastructure Upgrades and Developments will start in 2019/20 financial year.



Competitive Advantages MOSSEL BAY What you will find

Port Limitations:

- The harbour entrance channel has a depth of 8m
- Inside the harbour the maximum permissible draught is 6.5m.
- Inside the harbour vessels of up to 130m can be accommodated at quay 4.
- There is a slipway for ship repair up to 200 tonnes.
- The catenary buoy mooring caters for ships up to 32,000 tonnes with a maximum length of 204m and draught of 12m.



Competitive Advantages

Volumes:

- During the 2015 calendar year Mossel Bay handled a total of 1050 vessels with a combined gross tonnage of 4,540,038-gt, of which South African trawlers constituted the majority.
- In 2015 the port handled a total 2,518,316 tonnes of cargo, of which 2,474,522t was bulk cargo (almost entirely oil products) and 43,875t breakbulk.
- Imports amounted to 1,468,106t while exports totalled 1,050,290 tonnes even though Mossel Bay does not handle containers.
- The harbour of Mossel Bay caters mainly for fishing and service craft for the local oil industry and handles little other commercial cargo, and therefore has little in the way of sophisticated infrastructure.
- In keeping with this industry a full diving service is available for underwater inspection, hull cleaning, salvage etc.



Competitive Advantages





Competitive Advantages





Competitive Advantages

GEORGE ACSA (Airport company of South Africa)

- The closest airport is George (approx. 50 km) which has flights to all the major airports within South Africa.
- George airport now welcomes over 700,000 passengers each year.
- The airport is also a national distribution hub for cargo such as flowers, fish, oysters, herbs and ferns.
- George Airport has been awarded the South African Airport of the Year award six times.
- With 2017 recording a record number of passengers of 785,486, closing in on the design capacity of the airport which should necessitate further terminal expansion in the near future.
- ACSA currently has rights to develop a hotel and fuel station within the airport precinct.
- Mossel Bay airfield is planned to be upgraded to a Medium Airport in the near Future.



Competitive Advantages





Competitive Advantages

Nestlé (South Africa) (Pty) Ltd

- Nestlé (national) - 280 000 employees in 81 countries with 3700 currently employed in South Africa
- Products - infant nutrition, dairy, confectionery, water, pet care, food and beverages
- Gas Manufacturing
- Zero Water Processing Plant

Competitive Advantages





Competitive Advantages

- 5 June 2018 - Nestlé South Africa in Mossel Bay has today become the Swiss multinational's latest regional business to transform its dairy factory into a “zero water” manufacturing site.
- Over the past six years, the company has installed new water recovery, treatment and recycling technology at its Mossel Bay dairy factory, which is located in one of the Western Cape's most water stressed regions.
- This newly installed infrastructure will enable the factory to re-use and recycle water from its dairy operations.



Competitive Advantages

Southern Cape Veggies

- Southern Cape Veggies is part of the Fresh To Go Group.
- Supply vegetables to chain stores and other retailers.
- Situated near Mossel Bay and is widely regarded by many as the brassica and legume capital of South Africa.
- The majority of our Tenderstem (exclusive to Fresh To Go) is grown on various sites, including on our own farm.



Competitive Advantages





Competitive Advantages





Competitive Advantages





Competitive Advantages

Mosstrich

- A ostrich abattoir
- Distributors of Ostrich Meat
- Ostrich leather (South Cape Ostrich Tanning - one of the largest ostrich tanneries in the world – capacity of 75 000 skins per annum)





MOSSEL BAY

What you will find

Honey Bush

- Harmony Honey Bush and Cape Honey Bush
- Botanical name: *Cyclopia Intermedia* / Common name: Honey bush tea
- Honey bush plant probably owes its name to the yellow, honey-scented flowers that cover the bushes during spring.
- Honey bush tea is an indigenous herbal tea to South Africa, which has a pleasant taste and flavour.
- The earliest record of the early Cape colonists using it as a medicinal plant dates back to 1830.



MOSSEL BAY

What you will find

- The scientist reported in 1881, after scientific research that the herbal tea was caffeine free.
- There are many reasons why Honeybush tea is popular amongst health conscious consumers. There is a rich fund of medicinal folklore associated with Honeybush and its health benefits, much of which has now been verified by scientific analysis of the unique properties of this herbal infusion.
- South Africa's honey bush industry is still very young and produces an average 394 tons per annum (dry tea), but it is not the same each year.
- Most of this crop is exported to countries such as the Netherlands, Germany, the UK and the USA.



MOSSEL BAY

What you will find





MOSSEL BAY

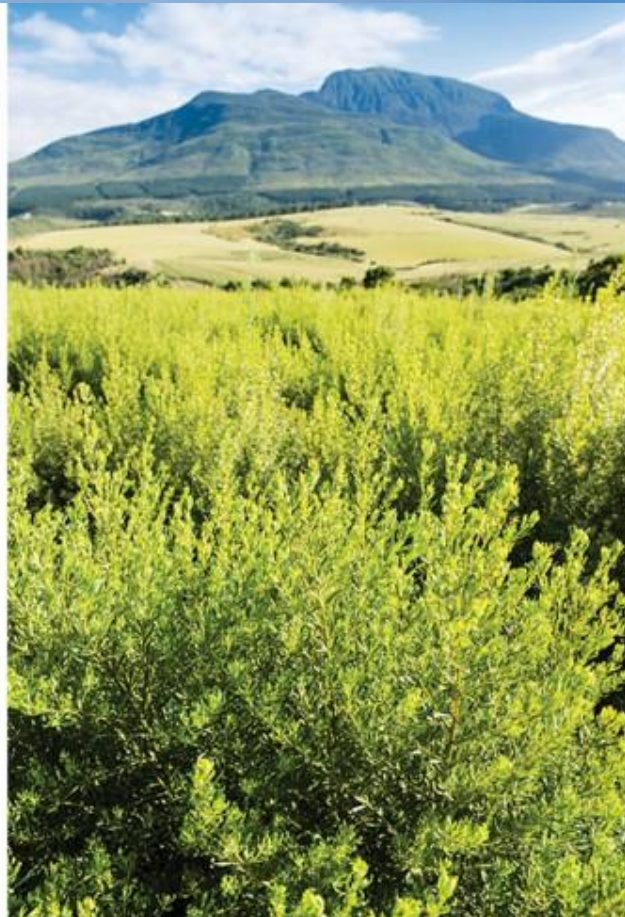
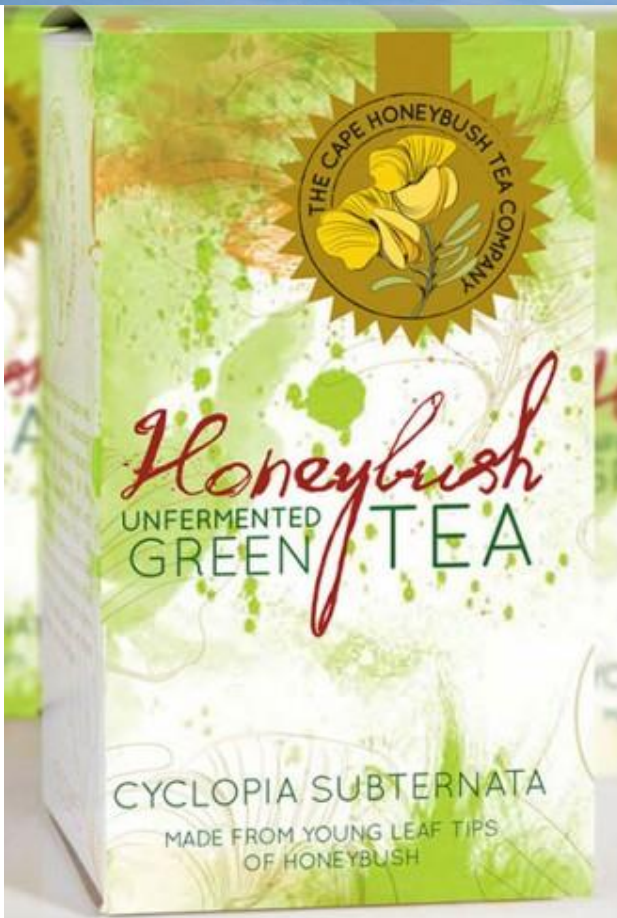
What you will find





MOSSEL BAY

What you will find





MOSSEL BAY

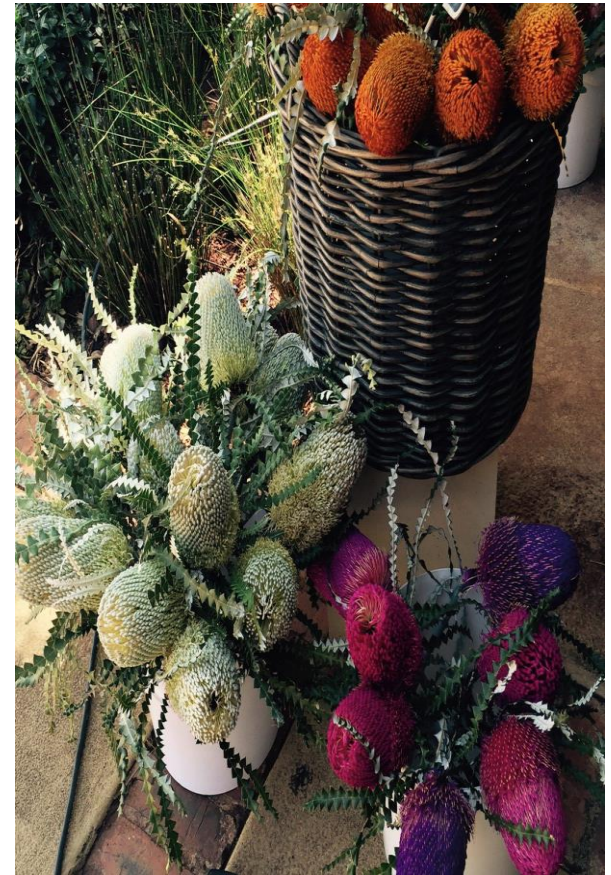
What you will find

Leeukloof Wildflowers

- Protea is a large, exotic flower available in many vibrant shades, such as dark pink, blood red, bright yellow and caramel. Once dried, the colours will fade over time, leaving behind tan flowers which look gorgeous in wreaths or bouquets.
- Currently exporting Flowers
- Focus on Fynbos & wild flowers



MOSSEL BAY Wildflowers





MOSSEL BAY

What you will find

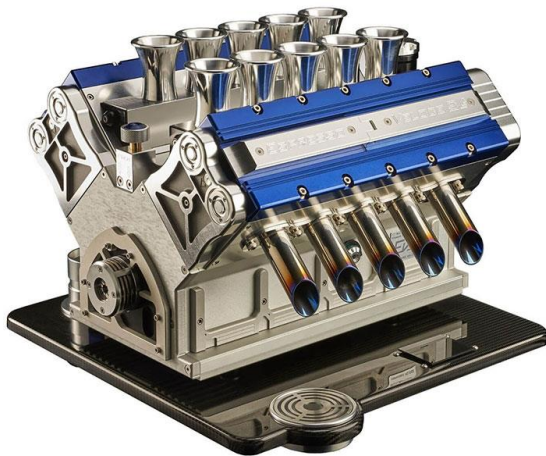
Espresso Super Veloce

- South African company Super Veloce have produced a series of espresso machines for the coffee-loving petrolhead.
- The coffee machines are made from natural alloys, stainless steel and lightweight titanium and have been built to look like an exotic engine blocks. Unsurprisingly, they are available in V8, V10 and V12 configurations and buyers can also choose between six colours for the valve covers (black, gold, orange, gunmetal grey, red and blue).



MOSSEL BAY

What you will find





MOSSEL BAY

What you will find

St Blaize Marine

- Eclipse 680 Catt Deep Sea Fishing boat with 2 x 115hp Mercury Optimax outboard motors
- Eclipse 680 Deep Sea Ski boat with 2x 90hp Suzuki 4 Stroke outboard motors



MOSSEL BAY

What you will find





MOSSEL BAY

What you will find

Whisper Aircraft

- Whisper X350 Gen II Quick-build kit
- Whisper X350 Gen II “Tail Wheel”
- Building and shipping all the parts to the buyer.
- Buyer constructs the Whisper X350 themselves.
- All round excellent performer plane.



MOSSEL BAY

What you will find





MOSSEL BAY

What you will find

Game Reserves and Game Farming

- Botlierskop
- Gondwana Game Lodge
- Garden Route Game Lodge
- Indalu Game Lodge
- Wolwedans Game Farm
- Hakuna Matata Game Farm
- Hartenbos Private Game Lodge
- Bergsig Game Farm (Kobus Crous Stud Game Service)



MOSSEL BAY

What you will find





MOSSEL BAY

What you will find





MOSSEL BAY

What makes us unique

Relative low crime rate

- Mossel Bay area, the murder rate is 39 in 2017 (per 100 000 population)
- Drug-related crime prevention and mitigation measures in Mossel Bay is resulting in an increase in defaulters being exposed and sentenced.
- The number of cases of driving under the influence of alcohol decreased because of law enforcement.
- Residential burglary cases decreased due to effective policing and proactive neighbourhood programmes.
- In 2016, there were a total of 15 fatal crashes involving motor vehicles, motorcycles, cyclists and pedestrians within the jurisdiction of the Mossel Bay Municipality.



MOSSEL BAY Safety



- Improve street and other lighting where possible especially in identified public open areas and concerned residential locations.
- Promote, maintain and strengthen programs such as Neighbourhood Watch.
- Promote and assist in expanding CID patrol services within the CBD and other identified areas of concern.
- Provision of timely feedback to community on the results of detection and deterrence measures and encouraging the reporting of crime.

- Reflect the strong support from the community for detection measures through the Municipality undertaking community crime prevention measures.
- Advocacy for greater police presence and patrols throughout the Municipality in particular the CBD area and identified hotspots such as taverns/clubs and public open areas.
- Promote the presence of CCTV in Council future infrastructure planning whilst considering the cost impact of implementing CCTV services in identified locations of concern.





MOSSEL BAY

What makes us unique

Transport systems

- George National Airport 50km
- Mossel Bay Aerodrome
- Mossel Bay National Harbour
- N2 (Highway)
- R102
- Louis Fourie





MOSSEL BAY

What makes us unique

Holiday mecca

- 5 Blue Flag beaches
- Accommodation
- Restaurants
- Adventure Tourism
- Point Interpretive Centre & Gouritz Cluster Biosphere
- Arts & Crafts
- Various Festivals
- Sports Tourism



MOSSEL BAY MUNICIPALITY

Water Surety

- Average use per month
- Current surface water
 - Wolwedans Dam – Max 24 630MI Now 76%
 - Klipheuvel Dam – Max 4 450MI Now 75%
 - Ernest Robertson Dam – Max 410MI Now 100%
- Reserve 15MI / day desalination plant
- 2 Boreholes at about 2.75MI / day
- Rivers and weirs (like Kleinbos)
- Monthly consumption about 540 MI





MOSSEL BAY MUNICIPALITY

Electricity Supply

- Electricity is purchased from Eskom at six intake substations with a notified maximum demand of 77,5MVA and is distributed under a NERSA licence at voltages ranging from 230V to 66000V to various industrial, commercial and domestic customers.
- The peak maximum demand at this stage is 65,6MVA and there is spare capacity of 11,9MVA for future growth.



MOSSEL BAY MUNICIPALITY

Waste Water Treatment

- The total design capacity for the seven wastewater treatment plants is 22,54 Mℓ per day.
- The current combined average daily inflow for the seven wastewater treatment plants is 10,72 Mℓ per day.



MOSSEL BAY

Future Development



Marine Aquaculture

- Global declining in fish and seafood
- Mossel Bay identified as 1 of the best situated bays for aquaculture
- Tender out for a Environmental Impact Study
- Possible Declaration of Aquaculture Zone
- Create Employment Opportunities and Exporting to countries

Marine Aquaculture

- Initial discussions
- Joint co-operative government project (local, provincial and national)
- DAFF on tender for consultant to come up with a Marine Aquaculture zone
- Establish hatchery and fingerlings
- Yellow Tail and Cob
- Expression of interest done
- Town Hall discussions started
- Local people involved



MOSSEL BAY

Future Developments

Adventure Tourism

- Zipline
- Bridge Swinging
- Skydiving
- White Shark Cage Diving
- Sea-vu-Play Boat Adventures





MOSSEL BAY

Future Developments

Hotel on the bridge

- Hotel to be built between bridges and includes;
 - Accommodation
 - Restaurants
 - Entertainment
 - Gardens & Pathways
- Sleeping in the Air Experience
- Adventure Tourism Opportunities from Hotel





MOSSEL BAY

Future Developments

Rail Mobility

- Re-instating the train between Cape Town and Mossel Bay for passengers (tourist)
- Transnet freight to re-instate service between Cape Town and Mossel Bay
- Re-instating the train between Oudtshoorn and Mossel Bay for passengers (tourist)
- Voorbaai depot to be a fully operational workshop (Ceres Rail)
- Light passenger rail within Mossel Bay to lessen pressure on road infrastructure (Mayixhale Street precinct)
- Committee was established, 2 officials and 1 politician per municipality and other stakeholders like US,DTPW, Treasury, Transnet, Ceres Rail
- Challenges: Single Lines, Dilapidated Stations, Lack of Municipal Resources and Capacity
- The terms for medium term rail operations be jointly developed and then set in process, using a “Package of Plans” process
- By having a big picture in mind, systematically manage the ongoing process using a stage/gates methodology going forward





MOSSEL BAY

Future Developments

Mossel Bay Aerodrome

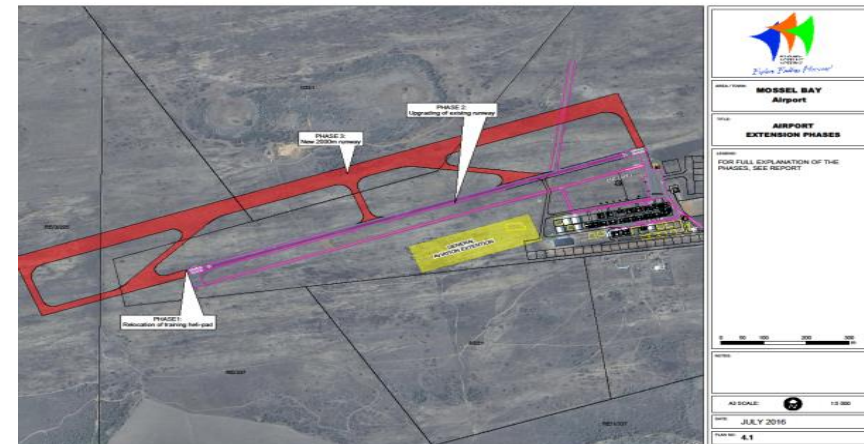
- Mosselbay Airport has a length of 4.39 kilometres.
- Currently, it is a privately licensed facility, owned by the municipality, and managed and operated by the Mossel Bay Aero Club.
- The long-term vision is to improve the facility to a full standard airport by constructing a new runway north of the existing runway which can accommodate a fire fighting unit, small business jets, serve as a diversion airport for certain commercial aircraft and accommodate scheduled passenger flights.
- Also, it is envisaged that a tower with flight information services per radio, terminal buildings and an appropriate apron will be added in several phases.

Mossel Bay Aerodrome

- George Airport is in process of expanding and will not be able to provide services to small scale businesses
- Capture the nice markets of navigation training, repairs, development
- Planned Upgrade of Air field as well as the Development of Alwyndal
- Mossel Bay Airfield to be developed to its fullest potential
- Partnership between Municipality and Aero Club
- Promote private ownership of hangers



MOSSEL BAY Future Developments





MOSSEL BAY

Future Developments

Health precinct

- De Nova area where Life Bayview Hospital, Vidamed, and health practitioners sees the potential of Mossel Bay as the health mecca
- Life Bayview Hospital was rated the 5th Best Hospital in South Africa
- Specifications for a study to identify further health services needed (EOH)
- Study to be funded
- Meeting with provincial Department of Health to discuss further health licences
- Study to be completed
- Incentives for new Medical Services / Points within demarcated area;
- Rehabilitation Centre
- Parking
- Wellness Village / Lifestyle Village for Pensioners
- Training facility for Nurses and Assistance Nurses
- Health Tourism Services





MOSSEL BAY

Future Developments

Point development

- Interpretive Centre (Pinnacle Point Human Origin)
- Upgrading of parking area
- Upgrading of trading area
- Outsourcing the management of the camp site
- Upgrading of the camp site





MOSSEL BAY

Future Developments

Regional landfill site

- Securing Airspace for all Municipalities within District
- About 8 000 tons per month
- Recycling
- Waste to Energy
- Chemical Plant
- Rail Waste Transport within District



MOSSEL BAY

Future Developments

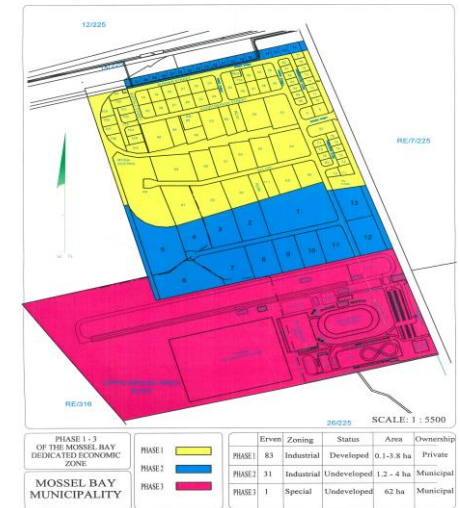
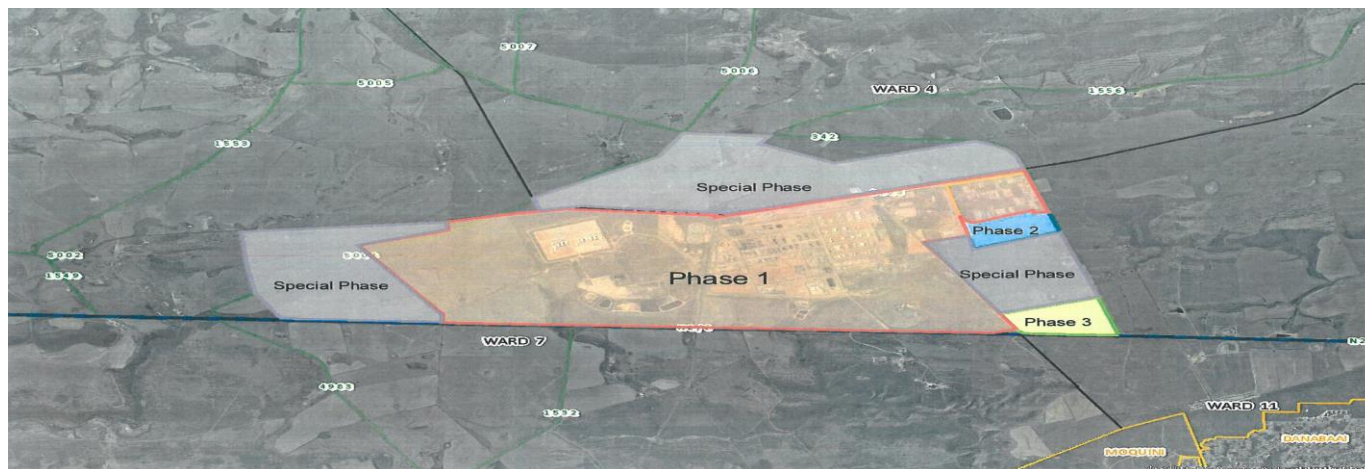
Mossdustria development and Motor Sport

- Mosdustria Development holds various opportunities for PetroSA, Private Sector, The Municipality and the community
- To be established as an Energy (fuel, biogas, singas) and Aquaculture SEZ or DEZ
- Motor part manufacturing facility
- Race track to be included in the development
- Energy indaba as part of marketing + Investment summit (DTI, WESGRO, DEDAT) focusing on biogas, singas, agriculture and agri-processing, aquaculture, waste, skills, education, health, tourism and specialist industries
- “Total” exploration
- Incentives for new industries inline with municipal prioritized focus areas
- Town Planning identified land and made provision for an expansion of Mossdustria
- A Land Owner Engagement is planned to get by-in and inform them about studies and plans for the area
- Technical Study will be done for the whole area and will be used to attract investors and industries to the area
- Project to avail industrial erven



MOSSEL BAY

Future Developments





Thank You

